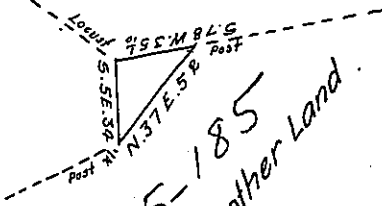


D-256

Bernard
McDonalds Land

David Laughlins Heirs
A 67-50



C 85-185
Warrantees other Land

A Draught of three acres and eighty two perches of land
 with six per cent for Roads Situate in Millford township in Mifflin County
 surveyed 27th January 1815 in pursuance of a Warrant to Thomas
 Harris dated 6th January 1815

Michael M. Monahan

To Richard T. Leech Esquire
 Surveyor General of Pennsylvania }

IN TESTIMONY that the above is a copy of the original remaining on file in
 the Department of Internal Affairs of Pennsylvania, made
 conformably to an Act of Assembly approved the 16th day of
 February, 1833, I have hereunto set my Hand and caused
 the Seal of said Department to be affixed at Harrisburg,
 this fifteenth day of March 1905

Loac R. [Signature]
 Secretary of Internal Affairs.